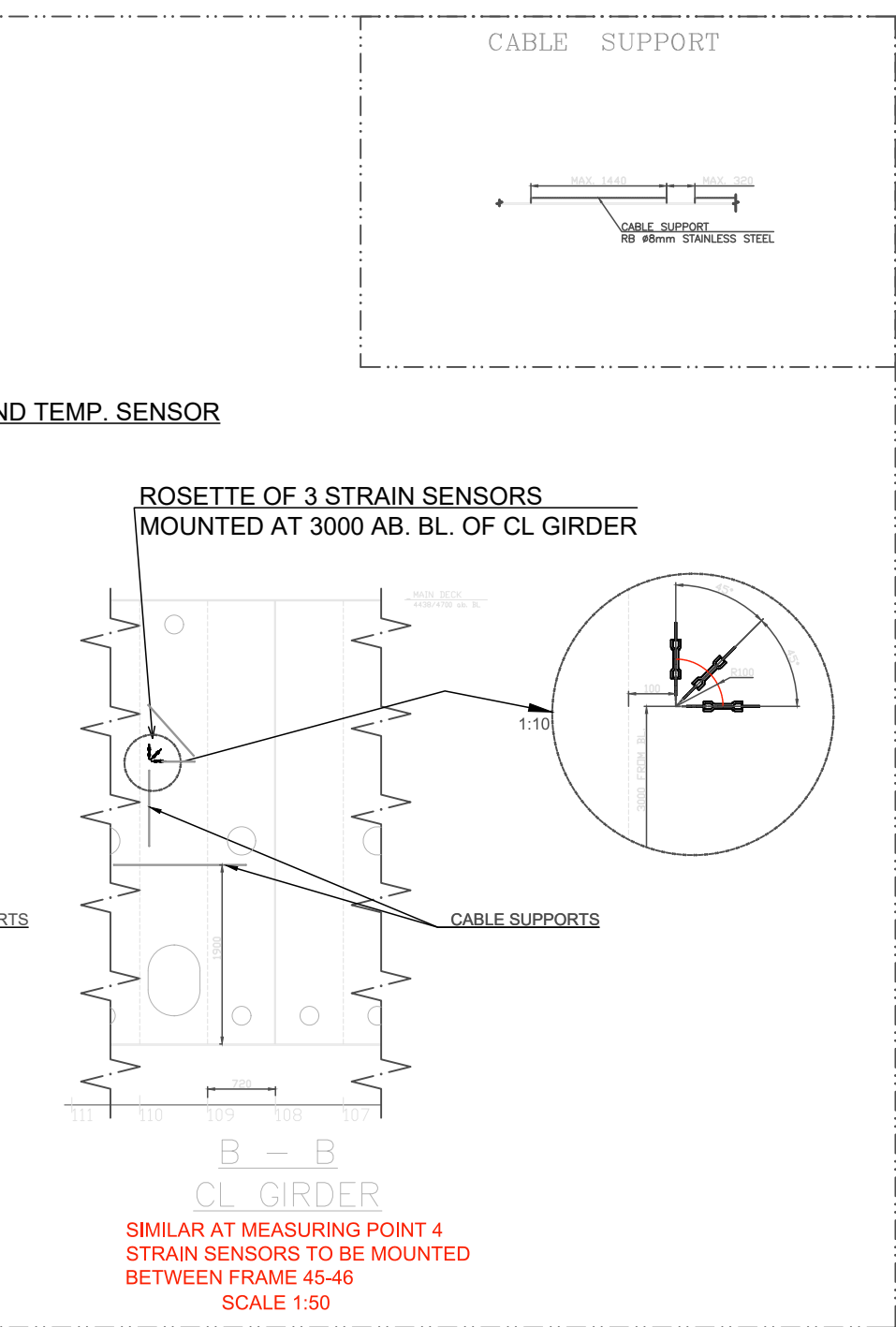
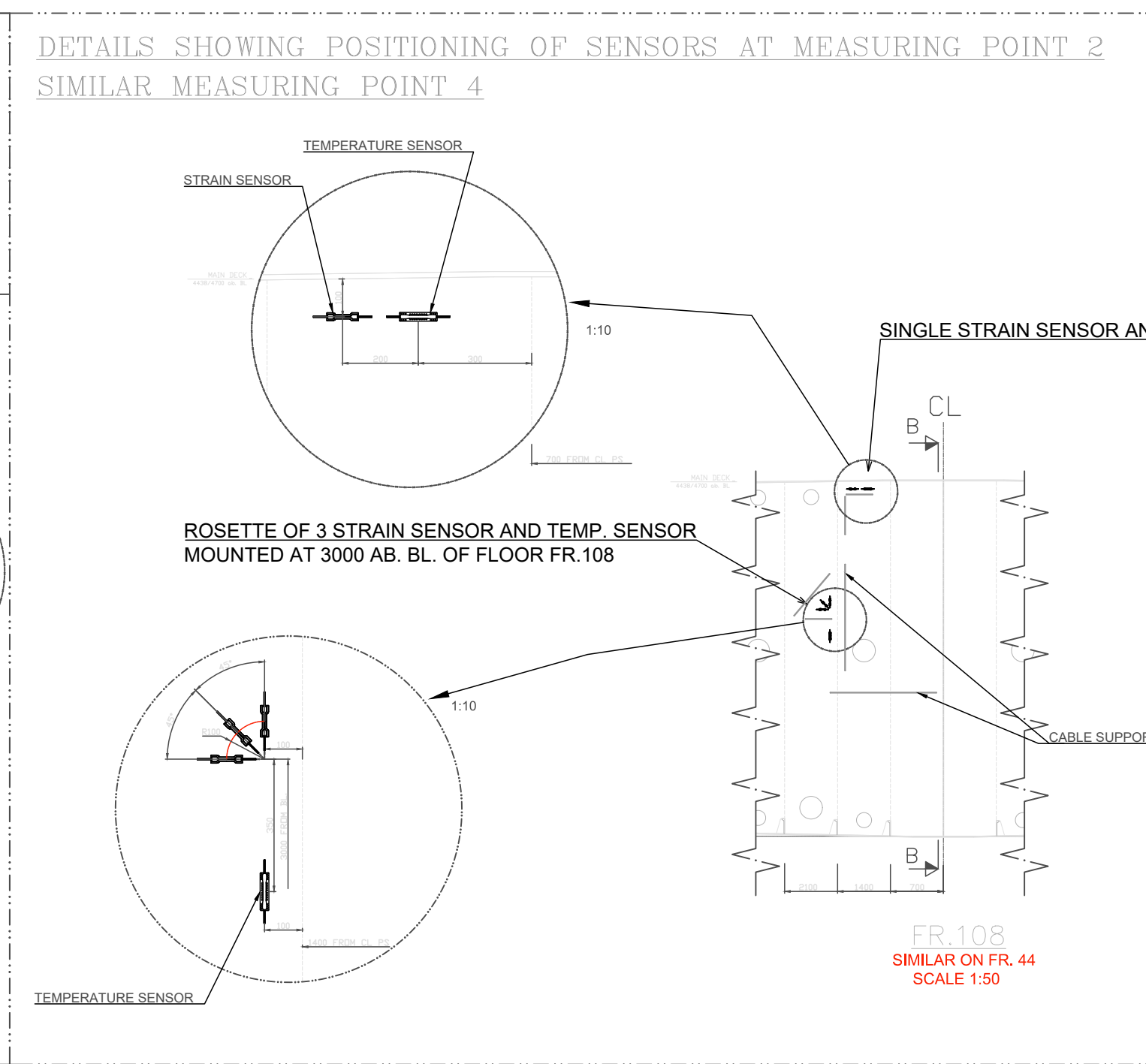
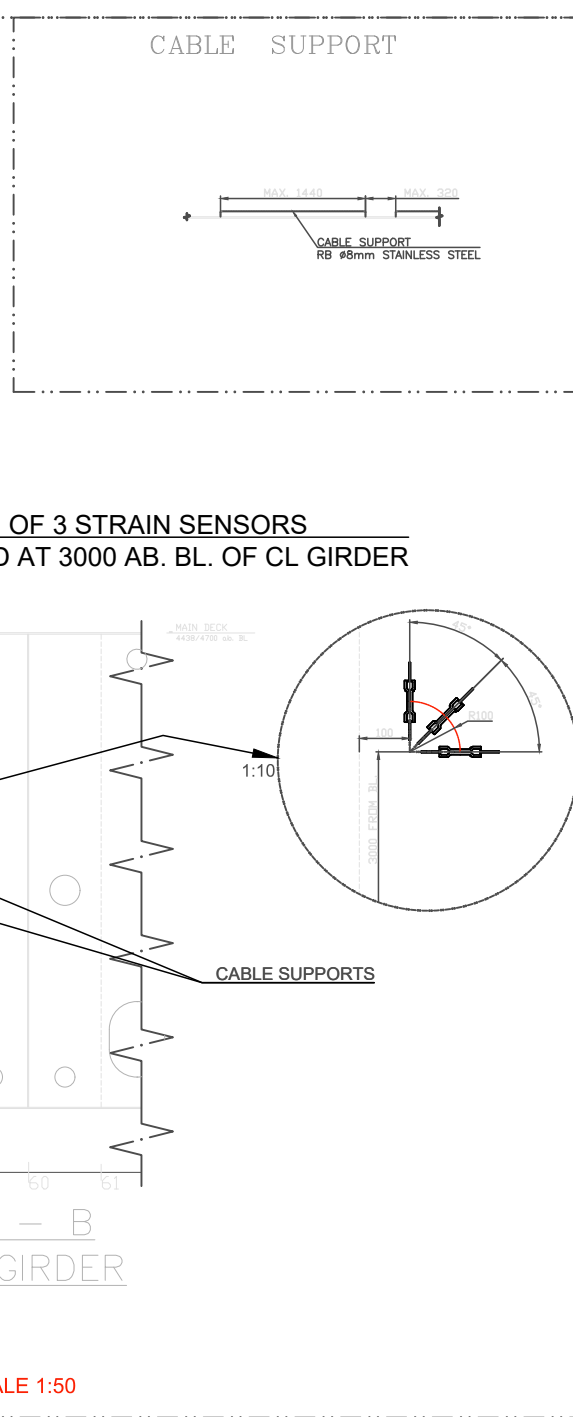
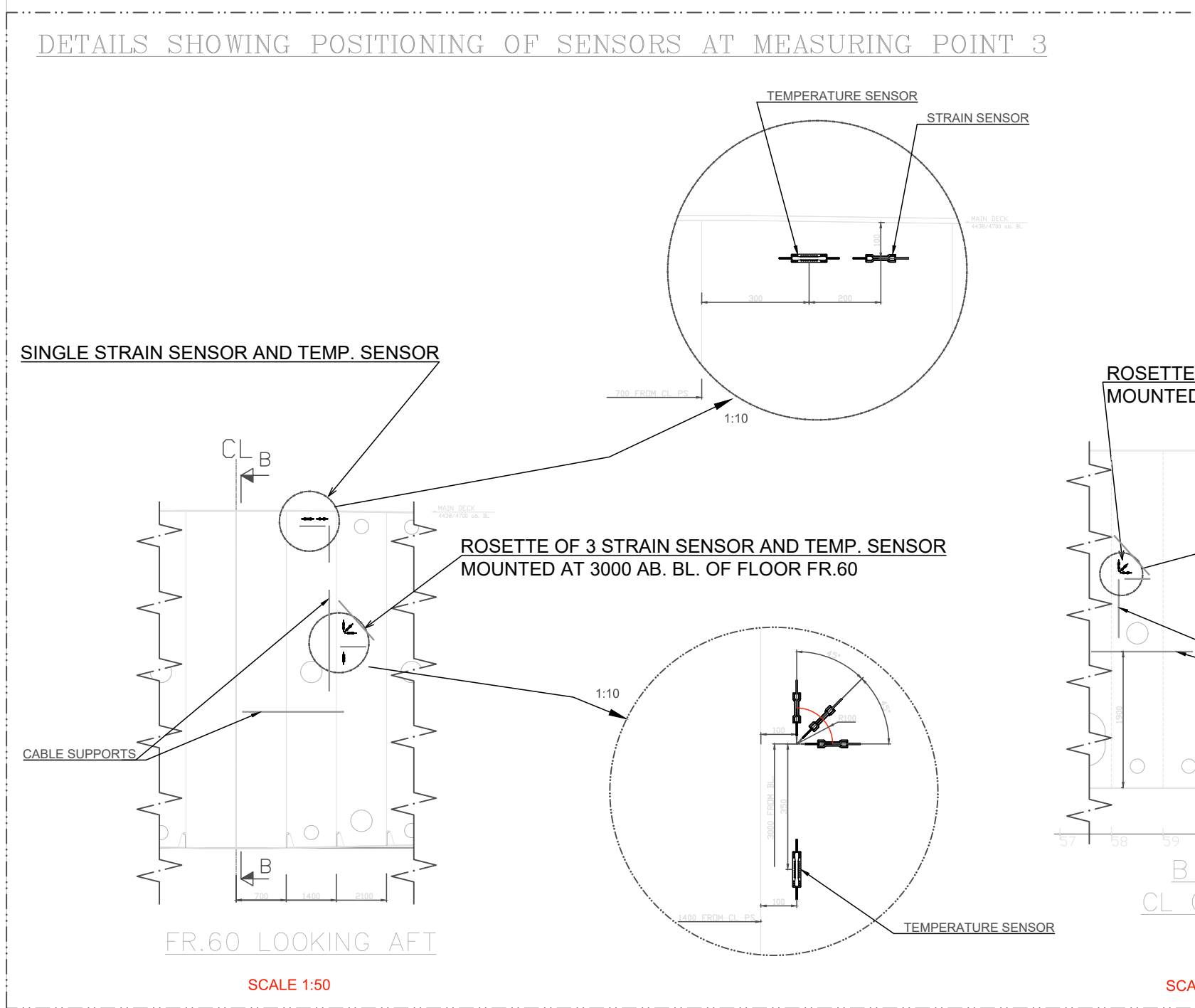


**MAIN DIMENSIONS:**

LENGTH of the PONTOON	168,48 m
LENGTH on MAIN DECK	187,85 m
LENGTH on TOP DECK	173,03 m
BREADTH of the PONTOON	39,60 m
DEPTH TO MAIN DECK	4,50/4,70 m
DEPTH TO SAFETY DECK	10,10 m
DEPTH TO SB PLATFORM	12,20 m
DEPTH TO INTERMEDIATE DECK	15,20 m
DEPTH TO UPPER DECK	18,20 m
FRAME SPACING	720 mm

- NOTES:**
- EACH MEASURING POINT INSIDE DOUBLE BOTTOM TANKS INCLUDES TEMPERATURE SENSOR MOUNTED ON TRANSVERSE FLOOR, ROSETTE OF 3 STRAIN SENSORS MOUNTED ON TRANSVERSE FLOOR, ROSETTE OF 3 STRAIN SENSORS MOUNTED ON CL GIRDER AND SINGLE STRAIN SENSOR AND TEMPERATURE SENSOR MOUNTED ON TRANSVERSE FLOOR UNDER MD
  - SENSORS AT EACH MEASURING POINT INSIDE DOUBLE BOTTOM TANKS TO BE CONNECTED IN SERIES WITH FOLLOWING SEQUENCE:
    - CABLE FROM INTERROGATOR TO SET OF 3 STRAIN SENSORS ON CL GIRDER
    - CABLE FROM SET OF 3 STRAIN SENSORS ON CL GIRDER TO TEMPERATURE SENSOR ON TRANSVERSE FLOOR
    - CABLE FROM TEMPERATURE SENSOR ON TRANSVERSE FLOOR TO SET OF 3 STRAIN SENSORS ON TRANSVERSE FLOOR
    - CABLE FROM SET OF 3 STRAIN SENSORS ON TRANSVERSE FLOOR TO SINGLE STRAIN SENSOR ON TRANSVERSE FLOOR UNDER MD
    - CABLE FROM SINGLE STRAIN SENSOR ON TRANSVERSE FLOOR UNDER MD TO TEMPERATURE SENSOR ON TRANSVERSE FLOOR UNDER MD
    - CABLE FROM TEMPERATURE SENSOR ON TRANSVERSE FLOOR UNDER MD BACK TO INTERROGATOR
  - UNDER UPPER DECK 1 STRAIN SENSORS AND 1 TEMPERATURE SENSOR TO BE MOUNTED IN SERIES WITH FOLLOWING SEQUENCE:
    - CABLE FROM INTERROGATOR TO STRAIN SENSOR UNDER UPPER DECK FR.117-118
    - CABLE FROM STRAIN SENSOR UNDER UPPER DECK FR.117-118 TO TEMPERATURE SENSOR UNDER UPPER DECK FR.117-118
    - CABLE FROM TEMPERATURE SENSOR UNDER UPPER DECK FR.117-118 BACK TO INTERROGATOR
  - 3mm ARMOR CABLES TO BE USED
  - CABLE SUPPORTS TO BE MOUNTED INSIDE TANKS, OUTSIDE TANKS: IN VOIDS AND CORRIDORS, EXISTING SUPPORTS TO BE USED FOR FIXING CABLES



Revision	Date	Description of modifications	Designed	Approved
5	21.05.22	Penetration through tank boundary added	PIL	
4	10.05.22	2 temp. sensors added under upper dk., Measuring point no.1 in DB removed, Cables routing changed from point 3 and 4	PIL	
3	23.11.21	Minor updates	PIL	
2	12.11.21	Position of sensors changed, moon pools added	PIL	
1	09.10.21	Issued for commenting	PIL	

FLOATING DOCK		Project No.	106-001
ARRANGEMENT OF SENSORS		Date	09.10.21
Scale	1:200	Sheet	1/1
Project No.	106-001	Revision	5