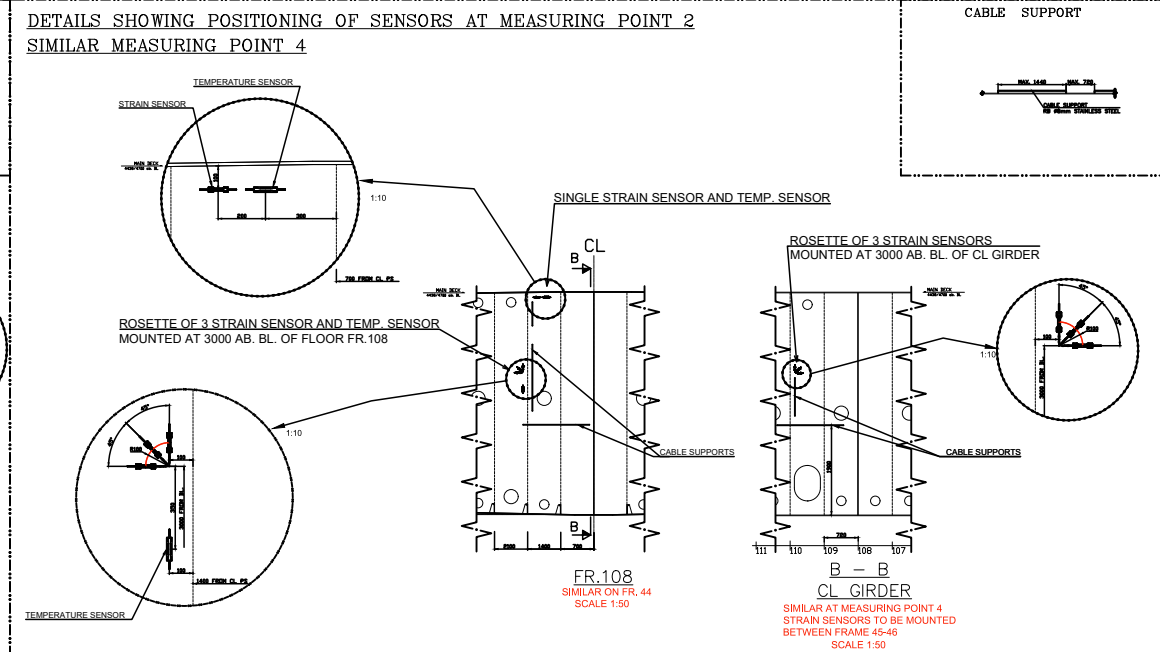
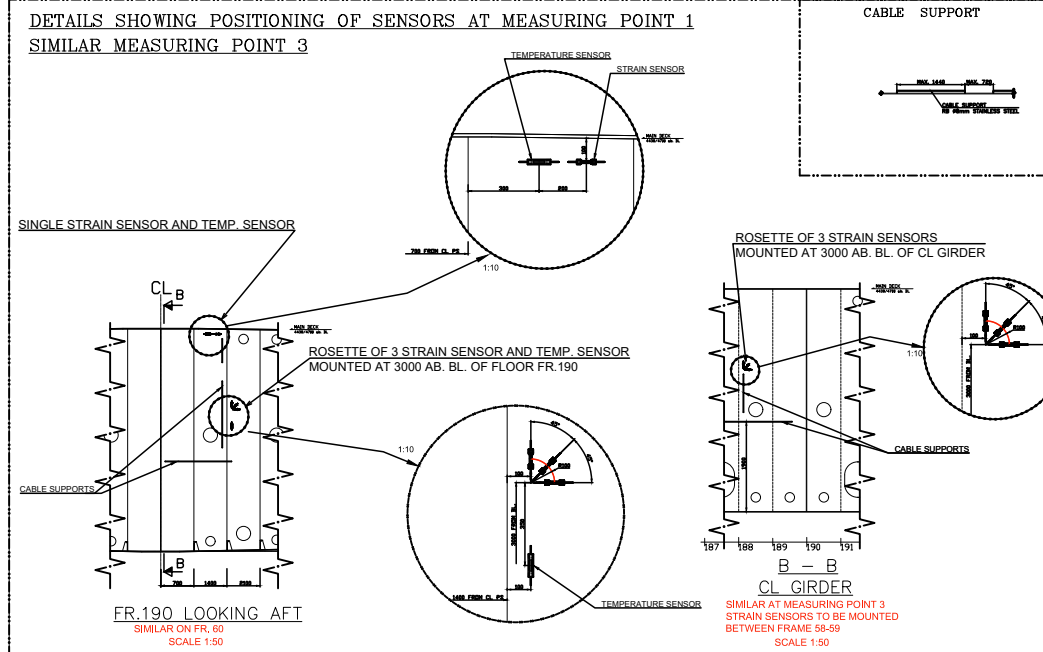


MAIN DIMENSIONS:

LENGTH of the PONTOON	168,48 m
LENGTH on MAIN DECK	187,85 m
LENGTH on TOP DECK	173,03 m
BREADTH of the PONTOON	39,80 m
DEPTH to MAIN DECK	4,50/4,70 m
DEPTH to SAFETY DECK	10,10 m
DEPTH to SB PLATFORM	12,20 m
DEPTH to INTERMEDIATE DECK	15,20 m
DEPTH to UPPER DECK	18,20 m
FRAME SPACING	720 mm

- NOTES:**
- EACH MEASURING POINT INSIDE DOUBLE BOTTOM TANKS INCLUDES TEMPERATURE SENSOR MOUNTED ON TRANSVERSE FLOOR, ROSETTE OF 3 STRAIN SENSORS MOUNTED ON TRANSVERSE FLOOR, ROSETTE OF 3 STRAIN SENSORS MOUNTED ON CL GIRDER AND SINGLE STRAIN SENSOR AND TEMPERATURE SENSOR MOUNTED ON TRANSVERSE FLOOR UNDER MD
 - SENSORS AT EACH MEASURING POINT INSIDE DOUBLE BOTTOM TANKS TO BE CONNECTED IN SERIES WITH FOLLOWING SEQUENCE:
 - CABLE FROM INTERROGATOR TO SET OF 3 STRAIN SENSORS ON CL GIRDER
 - CABLE FROM SET OF 3 STRAIN SENSORS ON CL GIRDER TO TEMPERATURE SENSOR ON TRANSVERSE FLOOR
 - CABLE FROM TEMPERATURE SENSOR ON TRANSVERSE FLOOR TO SET OF 3 STRAIN SENSORS ON TRANSVERSE FLOOR
 - CABLE FROM SET OF 3 STRAIN SENSORS ON TRANSVERSE FLOOR TO SINGLE STRAIN SENSOR ON TRANSVERSE FLOOR UNDER MD
 - CABLE FROM SINGLE STRAIN SENSOR ON TRANSVERSE FLOOR UNDER MD TO TEMPERATURE SENSOR ON TRANSVERSE FLOOR UNDER MD
 - CABLE FROM TEMPERATURE SENSOR ON TRANSVERSE FLOOR UNDER MD BACK TO INTERROGATOR
 - UNDER UPPER DECK 3 STRAIN SENSORS AND ONE TEMPERATURE SENSOR TO BE MOUNTED IN SERIES WITH FOLLOWING SEQUENCE:
 - CABLE FROM INTERROGATOR TO STRAIN SENSOR UNDER UPPER DECK FR.117-118
 - CABLE FROM STRAIN SENSOR UNDER UPPER DECK FR.117-118 TO TEMPERATURE SENSOR UNDER UPPER DECK
 - CABLE FROM TEMPERATURE SENSOR UNDER UPPER DECK FR.117-118 TO STRAIN SENSOR UNDER UPPER DECK FR.60-61
 - CABLE FROM STRAIN SENSOR UNDER UPPER DECK FR.60-61 TO STRAIN SENSOR UNDER UPPER DECK FR.174-175
 - CABLE FROM STRAIN SENSOR UNDER UPPER DECK FR.174-175 BACK TO INTERROGATOR
 - 3mm ARMOR CABLES TO BE USED
 - CABLE SUPPORTS TO BE MOUNTED INSIDE TANKS. OUTSIDE TANKS: IN VOIDS AND CORRIDORS, EXISTING SUPPORTS TO BE USED FOR FIXING CABLES



Revision	Date	Description of modifications	Designator	Approval
3	23.11.21	Minor updates	PIL	
2	12.11.21	Position of sensors changed, moon pools added	PIL	
1	09.10.21	Issued for commenting	PIL	

FLOATING DOCK			
Designed by	Date	Scale	Format
PIL	09.10.21	1:200	A0+
ARRANGEMENT OF SENSORS			
Project No.	Sheet	Revision	
106-001	1/1	3	